

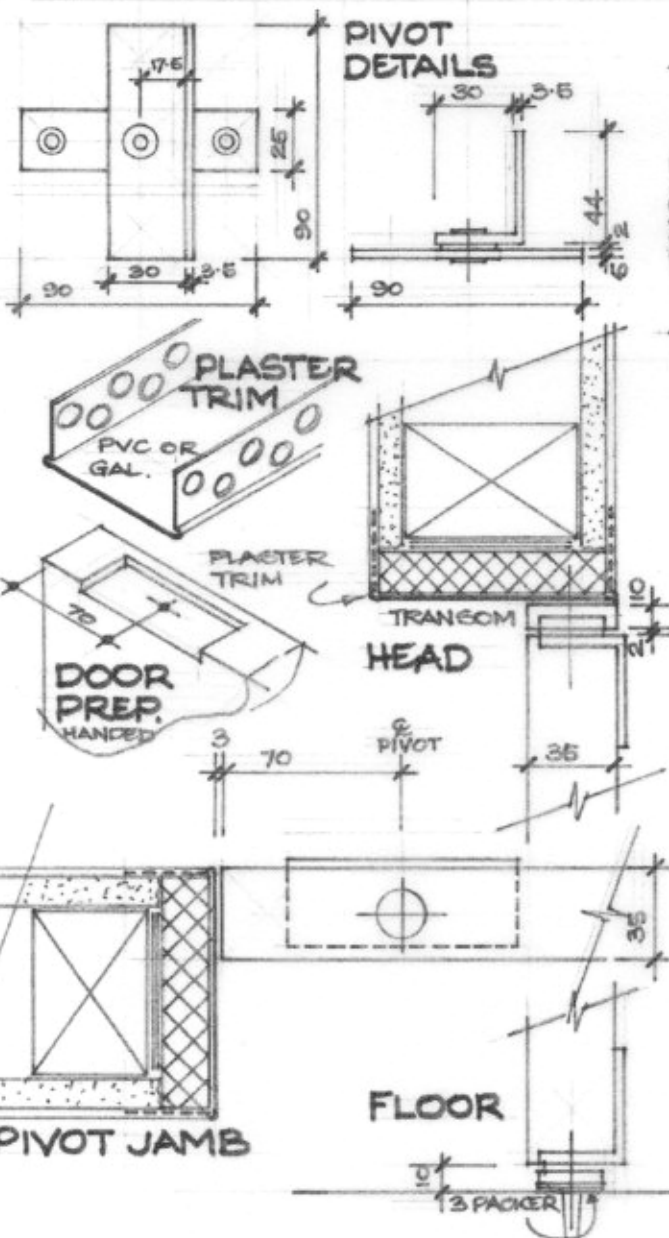
TOP-RAIL PIVOT KIT by Angle-Shoe

ALUMINIUM
TR35

Filing Guide - Hinges

StBAJDC 32
Masterformat 081400

16/10/16 print date



TR35 TOP-RAIL PIVOT KIT - DESCRIPTION

- easy-fit non handed pivot kit with transom
- ideal for pre-finished pivoting doors

DOOR APPLICATIONS

- bedroom (870 wide) bathroom (820) wide doors
- ideal for flush doors in square set plasterboard
- for 35mm doors to 50kg (1 3/8" to 100 pounds)

ADVANTAGES

- fast to install -. latch & lever handle not required
- traditional door frames & architraves not required
- requires only simple tools & limited trade skills
- non-handed - flip & rotate door to change hand
- tested to 300,000 cycles 90° open/close cycles

DOOR KIT SET COMPRISES:

- mini-transom - 876mm long - site adjust to 826mm
- integral pivots & magnetic catch
- fixing screws and fitting instructions

MATERIALS & FINISHES

- transom 6063 aluminium T5 temper
- transom finish CA Clear anodized (silver)
- pivot finish Silver grey powdercoat
- screws steel, zinc plated 4.5 dia. CS

NOTES FOR DESIGNERS

- accurate & plumb plasterboard work required
- clear open width 786mm for 870 doors for furniture
- clear open width 736mm for 820 doors
- doors do not swing open a full 180°

MADE IN CANBERRA - AUSTRALIA

Angle-Shoe Pivots
angleshoe.com.au

Unit 25A 43-51 Giles St Kingston ACT 2604 AUSTRALIA
Email hstyles@bigpond.net.au Tel (02) 6232 6455